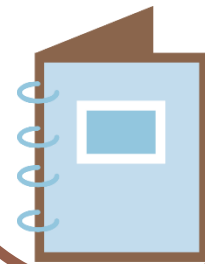
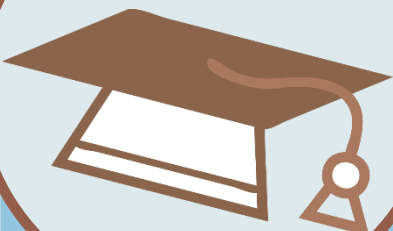


Directions: "A new Focus"



LWETB Athlone Training Centre in conjunction with Athlone Institute of Technology is delighted to announce a new course called "Directions".

The aim of this course is to provide students with the opportunity to sample an array of different career options and develop the skills and direction to move forward in their career.



Who is it for?

The course is mainly aimed at those who have recently left school or have withdrawn from a college course. The Directions course is aimed to help focus your direction and help you define a clear path in your career



Starting
February
2016:
No Course
Fees

What it's all about?

This course is a unique initiative between Athlone Training Centre and Athlone Institute of Technology to provide a mechanism where students can sample different subjects in an open and supportive environment. The subjects covered will vary from Software, Hardware, Science, Hospitality, Business, Maths, Personal Development, Motivation and Career Guidance

How will I learn?

All aspects of the training are paid for. The course will be delivered via face to face classes in LWETB Athlone Training Centre and some aspects of the course delivered in AIT. Classes will commence in February 2016 and will be scheduled Monday to Friday for a six month period.


Students will have the opportunity to avail of work experience at the end of the course. If you are in receipt of a social welfare payment this will be paid on the course. A free bus service from a number of locations is provided.

What will I learn?

This course is aimed at sampling different modules in an informed manner so students have the opportunity to decide if this is an area they would like to pursue.

Modules sampled include:

- PERSONAL EFFECTIVENESS & COMMUNICATIONS
- PROJECT MANAGEMENT
- MATHS FOR STEM (SCIENCE, TECHNOLOGY, ENGINEERING & MATHEMATICS)
- SOFTWARE ENGINEERING
- PRINCIPLES OF CODING USING HTML & CSS
- INTRODUCTION TO PROGRAMMING IN PYTHON (GAMING)
- INTRODUCTION TO JAVA (BUSINESS)
- INTRODUCTION TO SOCIAL MEDIA & GOOGLE ANALYTICS
- BUSINESS
- INTRODUCTION TO ACCOUNTING
- ACCOUNTING PROCEDURES AND SYSTEMS
- INTRODUCTION TO MARKETING
- INTRODUCTION TO MANAGEMENT
- LIFE SCIENCES
- LAB SKILLS
- HOSPITALITY
- TOURISM INFORMATION & ADMINISTRATION



Focus your
direction in a
supportive
environment.
Take the time
to choose your
career

Contact for more information

Aileen Moloney, Athlone Training Centre.

Tel: 090 64 24200

Email: info@athlonetrainingcentre.ie

Web: www.athlonetrainingcentre.ie